

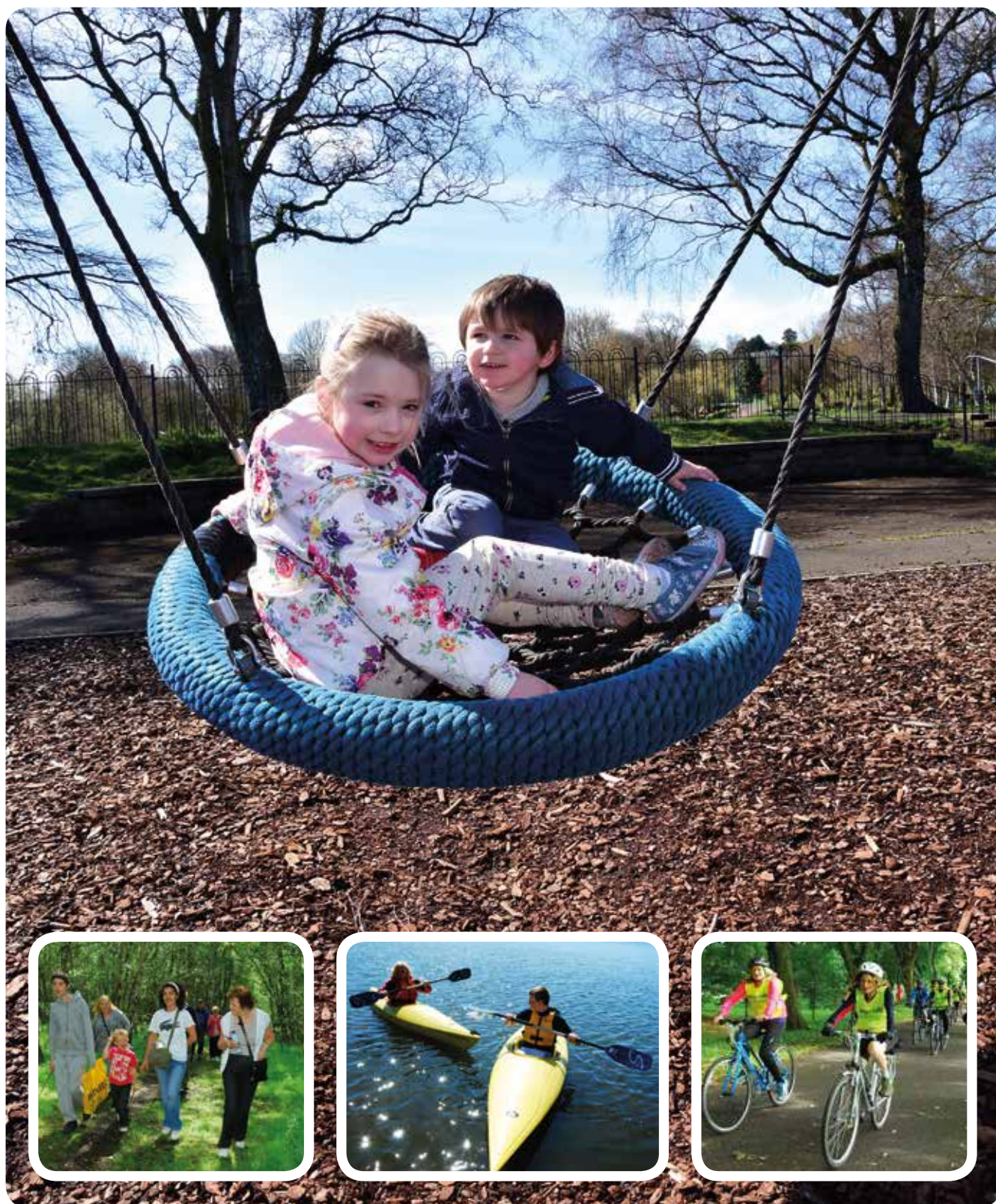
carlisle focus

summer-autumn 2016

CARLISLE
CITY COUNCIL



www.carlisle.gov.uk



LIMITED
SPECIAL OFFER

FINISHED?



Don't throw it away!

Help the environment and get your massively discounted food digester today. Call **0800 013 1304** or go to **www.greatgreensystems.com/promotions/ggscumbria**

From
£15
RRP £79.50!

Welcome to our latest edition of Carlisle Focus. It gives an update on how the 2015 floods affected our services and provides information on the Property Resilience grants available to flood-affected households and businesses. Please take the opportunity to find out more about the scheme, as grants of up to £5,000 are available.

We need your support to keep Carlisle clean and our Neat Streets initiative has proved to be a success. If you'd like to report problem areas, or have any information that will help us to target our dog fouling patrols or prosecute those who fly tip or litter, please contact us.

There are lots of ways to get active this summer and we also have a packed programme of events planned, including the return of the Tour of Britain, open-air theatre events and The Queen's 90th birthday celebrations.

Colin Glover

Leader of Carlisle City Council, Cllr Colin Glover

Contents

Out and About in Carlisle	4
Events	6
News in Focus	8
Cleaner and Safer Carlisle	10
Flood Update	12
Property Resilience Grants	14

Get in Touch

Visit www.carlisle.gov.uk
Email customerservices@carlisle.gov.uk
Telephone 01228 817200
Follow @CarlisleCC on Twitter and like our Facebook page
Visit our Customer Contact Centre during normal office hours

Images courtesy of: Cuffe and Taylor; Cumbria's Museum of Military Life; Davie Sanderson; Open Book Tours; Race for Life; Stuart Walker Photography; Tour of Britain and www.sjstudios.co.uk

All details correct at time of going to print and are subject to change. Carlisle City Council does not accept responsibility for any goods or services offered by advertisers.

Where to Contact Your Carlisle City Councillor

BELAH	
Cllr Gareth Ellis (Con).....	07984 441329
Cllr David Morton (Con).....	01228 515486
Cllr Trish Vasey (Con).....	01228 593568
BELLE VUE	
Cllr Jackie Franklin (Lab).....	01228 530032
Cllr Jessica Riddle (Lab).....	01228 521311
Cllr Dr Les Tickner (Lab).....	07784 186043
BOTCHERBY	
Cllr Robert Betton (Ind).....	01228 530747
Cllr Jeffrey Bomford (Ind).....	07754 764529
Cllr Jack Paton (Ind)	07922 144726
BRAMPTON	
Cllr Steve Layden (Con).....	016977 46659
Cllr Mike Mitchelson (Con).....	016977 2871
BURGH	
Cllr John Collier (Con).....	01228 522510
CASTLE	
Vacant	
Cllr Joanna Coleman (Lab).....	01228 540935
Cllr Barrie Osgood (Lab)	01228 522154
CURROCK	
Cllr Heather Bradley (Lab).....	01228 533162
Cllr Colin Glover (Lab).....	01228 543042
Cllr Abdul Harid (Lab).....	01228 591167
DALSTON	
Cllr Trevor Allison (Lib Dem).....	01228 523923
Cllr Nigel Christian (Con).....	07854 374006
Cllr Ann McKerrell (Con).....	07736 855050
DENTON HOLME	
Cllr Ruth Alcroft (Lab).....	07862 254575
Cllr Hugh McDevitt (Lab).....	01228 530223
Cllr Chris Southward (Lab).....	01228 520183
GREAT CORBY & GELTSDALE	
Cllr Doreen Parsons (Con).....	01228 575191
HARRABY	
Cllr Rob Burns (Lab).....	07580 387893
Cllr Lee Sherriff (Lab).....	01228 544168
Cllr Jo Williams (Lab).....	01228 819774
HAYTON	
Cllr Raymond Tinnion (Ind)	07801 531262
IRTHING	
Cllr Syd Bowman (Con).....	01228 561185
LONGTOWN & ROCKCLIFFE	
Cllr Raynor Bloxham (Con).....	016977 42088
Cllr John Mallinson (Con).....	07968 251365
LYNE	
Cllr David Shepherd (Con).....	07720 906976
MORTON	
Cllr John Bell (Lab).....	01228 530388
Cllr Therese Sidgwick (Lab).....	01228 672081
Cllr Colin Stothard (Lab).....	01228 538634
ST AIDANS	
Cllr Lucy Patrick (Lab).....	01228 591767
Cllr Anne Quilter (Lab).....	01228 514653
Cllr Reginald Watson OBE (Lab).....	01228 521676
STANWIX RURAL	
Cllr James Bainbridge (Con).....	07896 300997
Cllr Marilyn Bowman (Con).....	01228 561185
STANWIX URBAN	
Cllr Elizabeth Mallinson (Con).....	01228 533746
Cllr Paul Nedved (Con).....	07745 302097
Cllr Fiona Robson (Con).....	07879 559287
UPPERBY	
Cllr Niall McNulty (Lab).....	07979 551999
Cllr Ann Warwick (Lab).....	01228 538746
Cllr David Wilson (Lab).....	01228 537472
WETHERAL	
Cllr Barry Earp (Con).....	01228 810010
Cllr Stephen Higgs (Con).....	01228 560815
YEWDALE	
Cllr Steven Bowditch (Lab).....	01228 530159
Cllr Tom Dodd (Lab)	07999 073929
Cllr Maureen McDonald (Lab).....	01228 535772

Talkin Tarn



Out and About in Carlisle

Play Areas

Hammond's Pond and Talkin Tarn both provide play facilities for a variety of ages. There is lots to see at both locations, plus homemade food served up in their cafes. Other play areas have recently had new play equipment installed, including Keenan Park and St James's Park. Chance's Park has recently received funding from Tesco's Bag of Help Challenge for new facilities. These will be completed later this year.

Hammond's Pond Play Area & Cafe



Walking for Health

Walking is one of the best ways to improve your fitness and maximise health benefits.

Carlisle has a guided Walking for Health programme, open to all. They are **FREE** to take part in and last around one hour. All are on good paths, but please wear sensible footwear.



The summer programme includes:

- **Wednesday 8 June** - Carlisle 'City Circular' walk 10.30am & 1pm
Meet at Upperby Cemetery, Manor Road
- **Wednesday 22 June** - Summer Surprise
Between 10.30am - 3.30pm
Details to follow - as it's a surprise!
- **Wednesday 6 July** - Miltonrigg Wood 10.30am & 1pm
Meet at Miltonrigg car park off the A69, on the minor road between Naworth Castle and Hallbankgate

Other walking programmes are also available, including a weekly walk around Chance's Park on Mondays at 2.30pm and Tuesday Trundles over more challenging routes.

To find out more about our walking programmes contact us on **01228 817370** or visit www.carlisle.gov.uk/walking

Park Run



Carlisle's Parkrun is open to runners of all abilities and is held in Chance's Park, Wigton Road, each Saturday starting at 9am. Please come along and join in whatever

your pace! It's **FREE** to take part in the 5km run but you must register before your first run.

A new Parkrun Junior will soon be available for younger runners. This will start on **Sunday 12 June** at 9am in Bitts Park. The event is free to take part and will take place every week. For more information on Carlisle Parkrun and Parkrun Junior, visit www.parkrun.org.uk/Carlisle

Sky Ride

A programme of **FREE** guided bike rides is underway in Carlisle. Part of a national campaign to get more people cycling for fun, Sky Ride Local is a fantastic range of new led bike rides.

Each ride will focus on different levels of cycling ability from family led rides to more challenging and longer rides.

- **Sunday 12 June** Carlisle - Bitts Park, Rickerby Park, Linstock and Willowholme (10 miles)
- **Sunday 3 July** Brampton - Riding with the Romans (19 miles)
- **Sunday 10 July** Carlisle - Watchtree Wheeling (3 miles)
- **Sunday 24 July** Carlisle - Dalston and Burthwaite Loop (10 miles)
- **Sunday 21 August** Tour of Carlisle (17 miles)
- **Sunday 4 September** Tour of Britain Ride - Brampton to Talkin Tarn
- **Monday 5 September** Tour of Britain Ride
- **Sunday 18 September** Carlisle - Hethersgill Circular (28 miles).

All Sky Ride Local events are subject to change.

Ride Social is a chance to find like-minded cyclists in your area and organise group rides between friends. For more information on Ride Social and the full Sky Ride Local schedule please visit www.goskyride.com/carlisle

Breeze cycle rides, for women only, are also available. To find out more, visit www.goskyride.com/Breeze



Tennis

Bitts Park tennis courts have re-opened following the December floods. Following an extensive clear-up, the four hardcourts are available Monday to Friday between 4pm and 8pm & Saturday to Sunday between 10am and 4pm. Court hire is £5 and equipment is also available to hire.

Courts can only be booked from the temporary kiosk, based within a portacabin or by calling **07873 860322**. Only cash transactions are available at the site.

Tennis coaching programmes are also available including for ages three years old to adults. All courses can be booked at The Sands Centre on a nine week rolling block or to arrange for a free trial phone **07515 947790**. In addition to adult coaching, there are also cardio tennis, a club night for friendly match play, plus para and inclusion tennis. Individual and joint coaching sessions can also be arranged.

May half term and summer tennis camps are also planned, in addition to a Great British Tennis Weekend on **Saturday 16 July**. To find out more, visit www.better.org.uk/bitts-park

Carlisle Pageant



Events

Carlisle Pageant

As part of the Pageant Puppet Parade and Funday, activities are planned within the city centre's pedestrianised area on **Saturday 20 August** from 11am. A community parade including giant puppets depicting historic characters from the Industrial Revolution, will parade around the city centre from 2pm.

The ten-day Pageant programme will also include Best of Carlisle Market stalls between **Saturday 20 August** and **Tuesday 23 August**, a 'short fringe' arts festival between **Sunday 21** and **Tuesday 23 August** and an international market between **Wednesday 24** and **Monday 29 August**. The Great Fair Proclamation will be held on **Saturday 27 August**.



Talkin Tarn Open-Air Theatre



Walking Tour



Queen's Birthday Celebrations

A Right Royal 90th Birthday walking tour will be held around key Carlisle landmarks on **Saturday 11 June**. Starting at 1.30pm, the event will include tea and birthday cake in the Tithe Barn. Tickets cost £10 and are available from the Carlisle Tourist Information Centre.

A Queen's 90th Birthday Street Party will be held in Carlisle city centre between 10.30am and 4pm on **Sunday 12 June**. The free event has been organised by Hope Carlisle and will include children's activities and live music. Bring along your own picnic food and join in the party!

St Cuthbert's Church has also organised a Civic Service on **Sunday 12 June** between 11am and 12pm, followed by a picnic in the Tithe Barn. The British Legion is supporting the free event and the Border Concert Band will be entertaining the guests.

Open-Air Theatre

Two open-air theatre events will be staged in Carlisle this summer. Talkin Tarn will play host to productions of the Canterbury Tales on **Thursday 7 July** and Gulliver's Travels on **Thursday 18 August**. Get your tickets soon to avoid disappointment!

Tour of Britain



Tour of Britain

The Tour of Britain, the UK's biggest professional bicycle race, is set to return to Carlisle. Stage Two will take place on **Monday 5 September**, and will see the cyclists power their pedals from Carlisle's city centre to Kendal. As part of the build-up, a Carlisle Gets Sporty event will be held

in the city centre and surrounding areas on **Saturday 3** and **Sunday 4 September**. There will be hands on taster sessions and lots of sporting activities to try out. Come along and get sporty!

Carlisle Fireshow



Fireshow 2016

This year's Bitts Park Fireshow will be held on **Saturday 5 November** and will celebrate Carlisle's industrial past. The Fireshow pre-entertainment will start at 6.45pm and the bonfire lit at 7pm. Admission is **FREE** and a charity collection will be held with all donations going towards local good causes. A Fireshow Funday will be held on the same day between 2pm and 6pm in Carlisle city centre. The family-friendly fun will include **FREE** activities, with street entertainment, face painting and much more.

Events City

Rod Stewart on Tour



Rod Stewart will perform in Carlisle this summer as part of his Hits 2016 Tour. The music legend will take to the stage on the evening of **Tuesday 21 June** at Carlisle United's Brunton Park stadium. A limited number of tickets are still available.

Carlisle city centre will play host to events throughout the summer including Armed Forces Day on **Saturday 25 June** and Cumbria Pride on **Saturday 17 September**.

The Christmas Lights Switch-On will be between 1pm and 5.30pm on **Sunday 20 November**. The afternoon's entertainment will include local talent groups and performers. The galaxy of Christmas lights will be switched on at 5pm.

To find out what's on in Carlisle, visit www.discovercarlisle.co.uk

Lights Switch-On



Local Brew for Sale



News in Focus

Carlisle Tourist Information Centre

Visitors can now buy bottles of locally produced beer from the recently refurbished Carlisle Tourist Information Centre. Improvement works to one of Carlisle's oldest buildings were completed last summer and since then the visitor centre has been stocking their shop shelves with a variety of products made in Cumbria. Carlisle Brewing Company beer is the latest new product to go on sale including Magic Number, Spun Gold, Oatmeal Stout and Carlisle Best Bitter. State Management Scheme merchandise is also available to buy, alongside handmade Cumbrian jewellery from Little Silver Fingers, sweet items from Cartmel, Kendal Mint Cake liqueur and products from the Feltarn range.

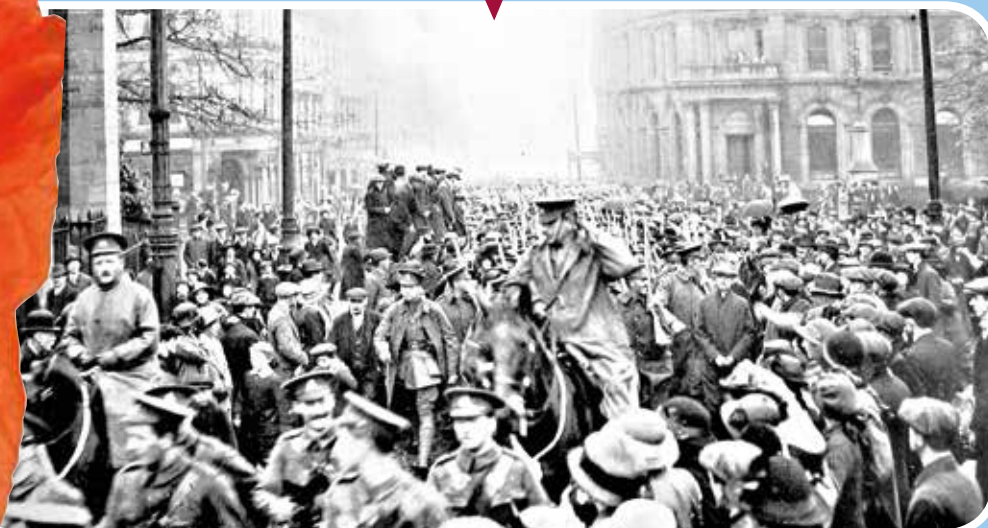
Voices from the Somme

An exhibition commemorating the Battle of the Somme will be held at Cumbria's Museum of Military Life in Carlisle Castle. Opening on **Friday 24 June**, it has been supported by the Heritage Lottery Fund. Fought between July and November 1918 near the Somme River in France, it was one of the bloodiest military battles in history. Throughout the 141 days of the conflict almost 1,700 soldiers from the Border Regiment died and approximately 3,500 were injured.

The exhibition in the Alma Building within Carlisle Castle will focus on the seven battalions of the Border Regiment and will include stories, photos, documents and objects from the local community.

An additional part of the project includes a community poppy arts project. Working with the Women's Institute, the Museum has put an appeal out for 1,700 knitted or crocheted poppies, recreating the support for soldiers from communities back home. The poppies will form part of a huge art installation displayed at the museum in November. To find out more about the exhibition, visit www.CumbriasMuseumofMilitaryLife.org

WW1 Troops Parade Up Botchergate



Richardson Street Cemetery



Remembrance Services

Local residents are being invited to Carlisle Crematorium's Annual Remembrance Service on **Sunday 10 July**. Held in the Crematorium Chapel, the service will start at 3pm. The 25th annual memorial event is an opportunity for partners, relatives, friends and colleagues to take time out to join in an afternoon of remembrance. A Babies' Memorial Service will also be held in Richardson Street Cemetery Chapel at 3pm on **Saturday 3 September**.



Disabled Facility Grants

If you need to make changes to your home, to provide a safer environment for yourself or a family member, then we might be able to help you. Disabled Facility Grants (DFGs) are available to pay for adaptations to support people with disabilities to live more independently in their homes such as stairlifts, level access showers and ramps. The maximum grant available is £30,000.

Means testing applies in certain cases, but this excludes aids and adaptations for children and those receiving some benefits. We will only deal with an enquiry for a Disabled Facilities Grant once we receive a referral from an Occupational Therapist. To obtain a referral you can contact Cumbria County Council Adult Social Care on **01228 221590**. Alternatively you can get a private Occupational Therapist referral, which may be refunded through the grant process if your application is successful. Visit www.carlisle.gov.uk

News Round Up

AWAZ Cumbria along with its partners CROPT, OutREACH Cumbria, Cumbria Youth Alliance, Carlisle MENCAP and The Heathland Project has jointly developed an innovative programme to turn the **Spotlight on Hate Crime**. Supported by the Office of the Police and Crime Commissioner, it encourages perpetrators of hate crime/incidents or those at risk of offending, to change their hearts and minds and move away from prejudiced behaviour. They will see the impact of hate crime on victims, witnesses and their families, plus show how a hate crime conviction can have negative impact on their future. Visit www.awazcumbria.org/TSP

Carlisle Educational Charity provides grants to help the further education of young people under the age of **25 on 1 October 2016**. To apply you must be a resident (or children of residents) of Carlisle and either: due to attend full time courses this autumn at a university or institution of further education; be a graduate doing, or wishing to do, higher studies or get professional qualifications; be a student who has to travel in this country or abroad as an essential part of your course. The deadline for applications is **Friday 23 September 2016**. Visit www.carlisle.gov.uk/cecharity



Neat Streets



Cleaner and Safer Carlisle



Neat Streets

A 'Neat Streets' campaign is underway in Carlisle. The new initiative is targeting back lanes and aims to get them free of fly tipping and litter. The scheme was piloted in St Aidan's ward - Alexander Street, Brook Street, Linton Street and Sybil Street. A clean-up was organised and all items within the back lanes were removed. The initiative proved to be a success and plans are in place to extend it to other areas within Carlisle.

To find out how to report problem areas, or provide us with information that will help us to target our dog fouling patrols or prosecute those who fly tip or litter, please visit www.carlisle.gov.uk

When providing information, please give us as much detail as possible:

- Where the fouling/littering/fly tipping is?
- What time of day it is happening (dog fouling)?
- Who is responsible?

Any information you provide us with will be treated in the strictest confidence.

Report a Problem



Pest Control

We provide public health pest advice and treatment for domestic properties.

We carry out treatments by appointment only; please visit www.carlisle.gov.uk to book an appointment for services for ants, mice, rats and wasps. For commercial premises or other pests please phone **01228 817559**.

These are normally carried out during office hours. We can also offer early mornings or late afternoon appointments during weekdays (not including bank holidays). Fees are payable at the time of booking.



Recycling Collection



Recycle for Carlisle

Although the majority of households have a kerbside recycling collection, we are looking at how we manage our collection of refuse and recycling to extend the kerbside schemes to even more properties.

- Last year Carlisle recycled 18,154 tonnes of material.
- The income from the sale of recycling helps us to maintain our frontline services including street cleaning and helps us tackle issues such as fly tipping and dog fouling.
- To help keep our streets clear of litter and to avoid attracting vermin, please don't put any additional refuse bags next to your bin or gull-proof sack. If you have excess rubbish or recycling that won't fit into your bin or gull-proof sack, please take it to a local Household Waste Recycling Centre for disposal (Rome Street, Carlisle or Townfoot Industrial Estate, Brampton). Please visit our website for a list of Carlisle recycling bring sites.

- Home composting bins are now cheaper than ever! You can buy one for only £7 (excluding delivery) by visiting www.getcomposting.com or call **0844 571 4444**. Food waste digesters are also available.

To find out more about recycling or to check collection dates, visit www.carlisle.gov.uk/refuseandrecycling

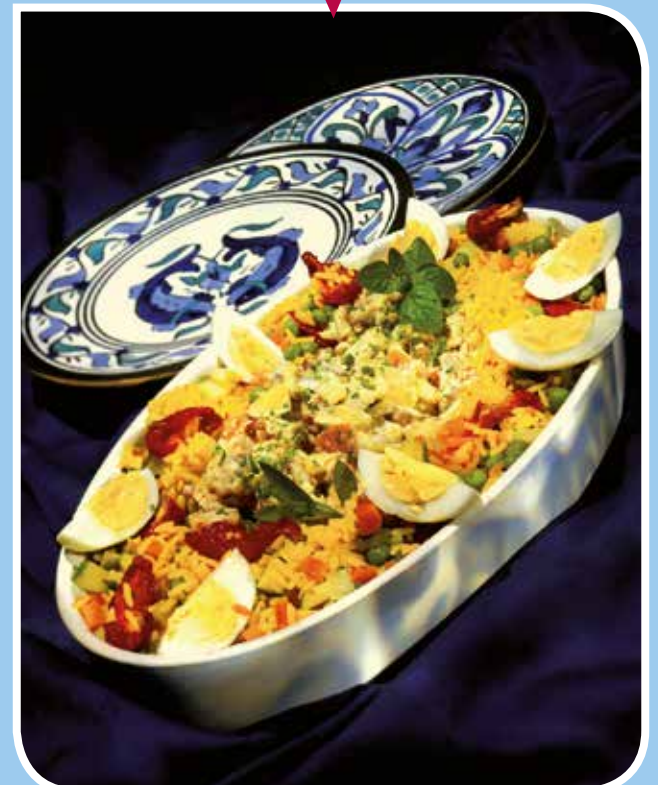
News in Brief

We are responsible for the collection of stray dogs. If you find a dog, please contact us on **01228 817399**, between 8am-10pm, seven days a week (except Christmas day). The last collection will be 9.30pm. Calls are diverted after office hours so please allow time for the call to get through, if there is no answer please leave your details and we will call you back.

The Local Healthy Options Award scheme is up and running in Carlisle. It encourages local cafes, restaurants and takeaways to provide healthier food options. Businesses that get a score of 75% or more are awarded with a Local Healthy Options Award and those with 100% achieve a gold Award.

Give A Day to the City is one way you can make Carlisle even greater. Last year's event included 12 different projects. The organiser's of the community initiative want to welcome more people with a passion and a project to get involved in this year's event. This will be held between **Monday 6 and Sunday 12 June**. To find out more, visit giveadaytothecity.org

Healthy Options



Carlisle Floods



Flood Update

The storms in late December 2015 had a devastating effect on Carlisle and as well as the severe impact on local homes and businesses, a high percentage of our assets were flood damaged. More than 40 were affected, including 20 buildings and properties. Water levels were up to 18 feet in the worst affected.

Flood Support

We have done everything we can to support residents and businesses following the floods. As part of the emergency response, we set up reception centres at Richard Rose Morton Academy and Greystone Community Centre, with the support of Riverside, Greystone Community Centre staff and volunteers.

Even though our Civic Centre building was under several feet of water, our services continued, including setting up a temporary customer contact centre. As soon as the flood water receded, we started the clear up of city streets. Around 520 skips were provided in flood affected areas for residents. Overnight closures were put in place for several nights on Warwick Road to enable local streets to be cleared while minimising disruption and avoiding danger to the public. Around 3,000 tonnes of flood material was disposed of from flood affected streets.

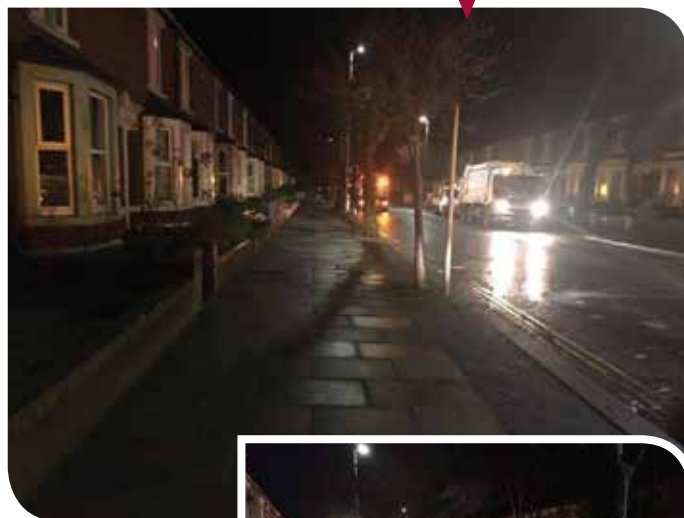
Bitts Park

Bitts Park play area was badly damaged. The safety of children using the site is paramount and we had no option but to remove damaged equipment. Replacement play equipment has been ordered and we hope to get the site up and running as soon as possible. Urban Adventure and the tennis courts are open to the public too. Bitts Park will also host Cancer Research's Pretty Muddy event on **Saturday 9 July** and Race for Life on **Sunday 10 July**.

Race for Life



Flood Clear Up



Urban Adventure



Hotspot Reopens this Autumn



Old Fire Station

We hope to have the Old Fire Station reopened by autumn this year. Many shows have been rescheduled and some comedy nights have been relocated to Harraby Community Theatre including Rob Beckett (above) on **Sunday 24 July**. The autumn programme includes Alabama 3 on **Saturday 6 August**, Dr Feelgood (top right) on **Thursday 6 October** and Black Grape on **Saturday 26 November**.

A new music festival - Milecastle 66 - will be held in Bitts Park between **Friday 23 - Saturday 24 September**. The event is organised by Mighty Boof Promotions in association with the Old Fire Station. More information is available at oldfirestation.carlisle.city

Stony Holme Golf Course



Stony Holme Golf Course

The golf course is open every day between 8am and 6pm. As the clubhouse remains closed, reception will be in a temporary portacabin. The phone lines are not as yet reinstated, so the team can be contacted in the interim period on **07767 888612**.

The Sheepmount

The impact of the floods on the indoor and outdoor facilities across the Sheepmount complex was extensive. The site will be out of action for several months at least.



Following a successful grant application by Carlisle City Council and Caldew School for National Lottery funding from Sport England's Flood Relief Fund, a new temporary athletics facility is now available at Caldew School.

The Sheepmount's grass pitches will require substantial ground works and we hope to have the facilities operational as soon as possible, but this will be dependent on the extent of damage to the drainage systems. The astro turf is likely to require a new surface and the access roads are also badly damaged. The whole Sheepmount site is not accessible to the public and fencing is in place to prevent entry to the site. Please do not enter the site as you will be putting yourself at danger.

Property Resilience Grants

Flood funding

Flood funding support is available for Carlisle businesses and residents. Our Flood Funding newsletter sets out what is available. Pick up a copy at our Customer Contact Centre or from www.carlisle.gov.uk

In addition to council tax and business rate relief for flood affected properties, Property Resilience grants are available for residents and businesses.

Who can apply for the funding?

Grants of up to £5,000 are available to homeowners and businesses that were flooded between **3-11 December 2015** or **24-28 December 2015**.

What does the funding cover?

This funding is available for works associated with flood protection of properties affected by the flooding. The deadline for applications is **Saturday 31 December 2016**. It can be used for resilient repairs, such as moving utilities as part of the restoration works or it could involve resistance measures, such as barriers to stop the ingress of water into a property.

Flood Clean Up



How can I apply for a Property Resilience grant?

Application forms are available from www.carlisle.gov.uk or from the Civic Centre's Customer Contact Centre. Please contact us at floodgrants@carlisle.gov.uk or call us on **01228 817200** if you have any queries.

What support is available?

Independent and impartial Property Level Protection surveys are available from JBA Consulting. These experienced property flood resilience specialists will assess the routes by which flood water could enter your property, as well as property type and condition. They will then produce a report of their findings, including recommendations for suitable flood protection options for your property.

Is the survey free?

If you apply for a Property Resilience grant, the survey cost will be paid for as part of the overall grant payment. We will manage the payment to JBA on your behalf.

How do I register for a survey?

To register for a survey please contact JBA Consulting at plp@jprop.co.uk or call **01633 410 021**. Please quote **CARLISLEPLP**.

Was your home or business flooded?



Apply now for a Property Resilience Grant

Up to £5,000 is available to fund measures which improve a household or business property's resilience or resistance to flooding.

The deadline for applications is **Saturday 31 December 2016**.



For more information about flood funding schemes and support, visit www.carlisle.gov.uk

CUMBRIA FLOOD NEWSLETTER

FLOOD FUNDING

The following support is available for properties affected by flooding between 3 and 11 December 2015 & 24 and 28 December 2015:

Community Grants:
If you are a resident and you haven't received your £500 payment for your household property, contact your local district council.

Council Tax and Business Rates:
If you had to move out of your home because of flooding you will receive a 100% council tax discount on both your flooded home and the property you have moved to if you are liable to pay council tax on your temporary home and you intend to return to your flooded property. If you are continuing to live in the property that has been flooded but are unable to use the whole property e.g. using only the upstairs rooms, you are also eligible for a discount.

There is 100% Business Rate relief for a three month period to all businesses flooded. The relief applies for the full three months even if the premises reopen within that time. A fresh application can be made if the adverse effects continue and will be considered by your local district council. The total maximum period for which relief can be obtained is 12 months.

Please contact your local council for more information.

Property Resilience Grants:
Up to £5,000 is available to fund measures which improve a household or business property's resilience or resistance to flooding.

Please read the guidelines before completing your application form and contact your local district council for support and guidance. They will be able to provide you with information on the application process and will be able to direct you towards information to help you complete it.

Part of the eligibility criteria allows you to get a qualified surveyor to assess your home and make a professional recommendation as to how the money is best used/invested. £500 of the overall £5,000 can be claimed against that cost.

Please turn over for more information...

How to Contact Your District Council:

Allerdale Borough Council
www.allerdale.gov.uk
floodgrants@allerdale.gov.uk
01900 702 600
Allerdale House, Workington, CA14 3YJ

Carlisle City Council
www.carlisle.gov.uk
customerservices@carlisle.gov.uk
01228 817200
Civic Centre, Rickergate, Carlisle CA3 8QG

Copeland Borough Council
www.copeland.gov.uk
info@copeland.gov.uk
01946 598300
The Copeland Centre, Catherine Street, Whitehaven, CA26 7SU

Eden District Council
www.eden.gov.uk
customerservices@eden.gov.uk
01768 817817
Town Hall, Penrith, CA11 7QF

South Lakeland District Council
www.southlakeland.gov.uk
customerservices@southlakeland.gov.uk
01229 733333
South Lakeland District Council, South Lakeland House, Lewther Street, Kendal, LA9 4DQ

Barrow Borough Council
www.barrow.gov.uk
customerservices@barrow.gov.uk
01229 876543
Town Hall, Duke Street, Barrow-in-Furness, LA14 2LD

Flood Recovery in Carlisle



What happened



in 24 hrs at Honister Pass, Cumbria



of average rainfall for December making it the wettest December on record*



Properties flooded

*Met Office data

What we have done



repair projects identified, due for completion before winter 2016



more people fully signed up to the flood warning service in Carlisle. Total sign ups now 4,430



flood defence assets inspected within the Carlisle City system



flood reports completed by residents to inform future plans

In December 2015, Cumbria experienced record rainfall. River levels were the highest recorded in Carlisle (almost 6.5 metres above average) and nearly 2,000 properties flooded.

Since then, Environment Agency Engineers, Flood Advisers, Geomorphologists, Hydrologists and other staff have been working tirelessly to help local communities recover and prepare for future heavy rain.

They have repaired flood defences, cleared waterways, signed more people up to receive flood warnings and investigated the cause and extent of flooding in the Carlisle area.

The 'Cumbria Floods Partnership' has also been working hard to identify what can be done across the Eden, Caldew and Petteril catchments to slow upstream flows and reduce flood risk in Carlisle and surrounding areas.

The Environment Agency is a core member of this partnership and has employed three Catchment Directors to lead this work. They aim to publish a 25-year Action Plan in July.

What next?

Up to £25million of government funds have been earmarked to improve flood risk management in Carlisle City, with further funding available for surrounding areas.

Before funds are allocated, it's important we have a clear understanding of the cause and extent of flooding so the best solution can be identified to reduce flood risk in the area.

The Environment Agency will consider all options of how best to use the funding; whether it be traditional "hard" flood defences or other "softer" options including natural flood management.

To help achieve this, a series of public meetings and drop-in events have been hosted to gather local knowledge that will help shape the future of flood risk management in the area. For details of future meetings visit the Cumbria County Council website at www.cumbria.gov.uk

Once the investigations are completed the County Council will publish a series of 'Section 19 Flood Investigation Reports' that will include recommendations of what action can be taken to reduce flood risk in the future.

The Environment Agency will then work with communities and partners to secure funding and deliver these actions.

What you can do to reduce the impact of flooding at home and work:

- Find out what your flood risk is
- Sign up to flood warnings. Call Floodline on **0345 988 1188**
- Develop a flood action plan
- Consider making your property more flood resilient with products and changes to the interior and exterior design www.gov.uk/flood