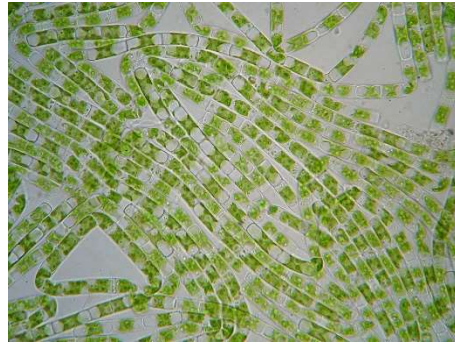


Talkin Tarn Algae



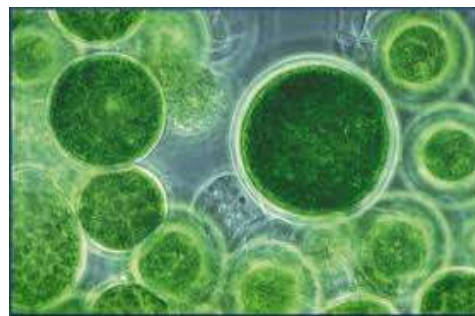
Filamentous Algae: normally present after periods of settled weather and sunshine – these species look like a furry mat of fibres that rise and fall in the waterbody depending on the amount of sunshine present



Blue Green Algae: A type of 'bacterial' algae that is generally a single celled species but can also be colonial. Ranges in colour from red to green to blue. Can often look like spilled paint on the water surface.



Green Algae: again, as before, these species can be colonial or single celled. Often makes the water cloudy and with look of 'pea soup'.



So what's it all about?

All of these algae's occur naturally in lakes all over the world. However, due to various factors such as pollution, nutrient level and climatic conditions, any may become dominant and seem to cause problems.

Although these different types of algae may look unsightly they are part of the waterbodies natural system, and provide a valuable resource for all the lakes inhabitants.

Species such as Little Grebe, Otter, Heron, Wigeon and Swan, among others, all benefit directly and indirectly from varying levels of different species of algae.

It is important that both pets and children are protected from entering the water at Talkin Tarn, when the levels of Blue-Green Algae are higher, as this particular species may be toxic, especially when a dog licks its coat clean after immersion, and as a result ingest a higher than usual amount.

What can we do?

All the algae species are problematic at higher than normal levels in that they are either difficult or impossible to remove from the water. Being naturally occurring they just regrow with additional vigour if removed mechanically.

The aeration system installed in the lake runs each day, and the air bubbles created disturb the water column inhibiting algae growth but not stopping it occurring altogether.

Reduction of nutrients and sediment entering the pond, discouraging the feeding of bread to ducks which rots away uneaten and pollutes the water (a healthier alternative is available in the café), aeration and management of the water level all help to reduce the impact of these algae species, but it is impossible to remove them completely.