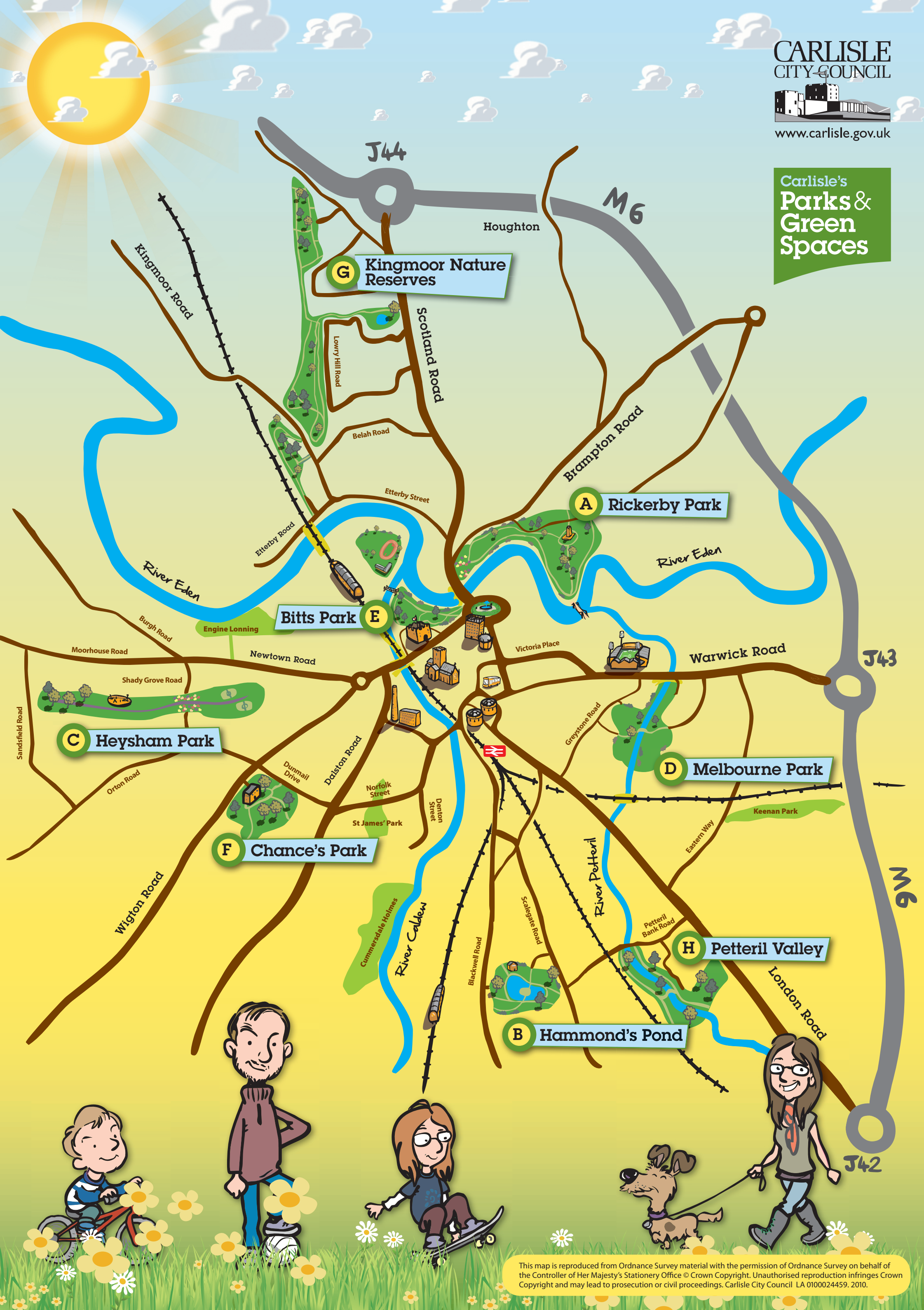


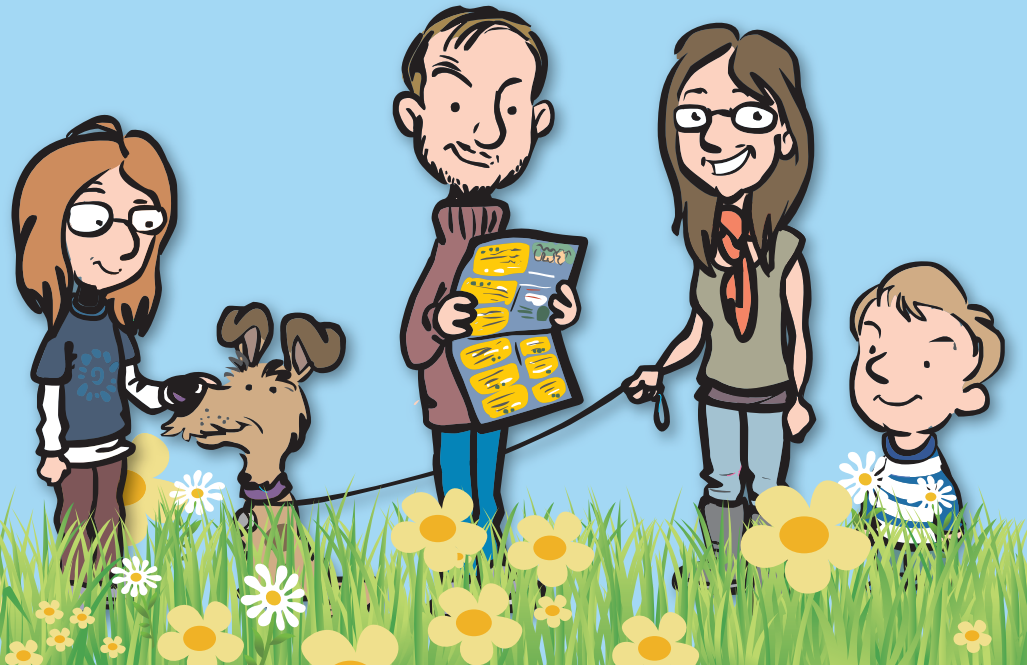


Carlisle's Parks & Green Spaces



# Carlisle's Parks & Green Spaces

## Relax. Discover. Walk. Run. Play. Do it all in one of Carlisle's Parks and Green Spaces.



### F Chance's Park



**Chance's Park** was gifted to the citizens of Carlisle by the prominent Chance family in 1944. Some of the original features remain from the landscaped parkland that was laid out around Morton Manor in the late 1700s.

- You can:**
- Play football or informal games.
  - Enjoy panoramic views over Carlisle and the North Pennines.
  - Take a refreshing break at the café in Morton Manor.
  - Swing, slide or spin in the play area.
  - Spot the unusual trees in the historic parkland.
- Visitor information:** Main entrance off Wigon Road. Open 24 hours all year; check for opening times of Morton Manor café.



### G Kingmoor Nature Reserves



**Kingmoor Nature Reserves** consists of Kingmoor Siding, Kingmoor South, Kingmoor North and Kingstown Wildlife Pond, each with diverse habitats steeped in history and all are a haven for wildlife. Well surfaced paths allow you to explore and get close to nature.

- You can:**
- Take a walk on the wild side of Carlisle.
  - Go pond dipping at the Wildlife Pond.
  - Explore access for all woodland footpaths.
  - Discover Kingmoor Sidings railway past.
- Visitor information:** Main entrance off Kingmoor Road. Open 24 hours all year. School visits can be arranged.



### H Petteril Valley



The **Petteril Valley** is a green corridor of riverside meadows and woodland with footpaths and a cycleway providing easy access. Dale End Field is ideal for informal games and activities, with a children's play area and a multi-use games area.

- You can:**
- Play basketball or 5-a-side football on the games area.
  - Explore the River Petteril and its wildlife.
  - Look for dragonflies by the pond.
  - Follow the cycleway towards the city centre.
- Visitor information:** Various entrances including off Petteril Bank Road and Woodsghyll Drive. Open 24 hours all year. School visits and conservation tasks can be arranged.

**Traveline Info.** Where possible, please walk or travel by public transport. For information, please contact North East and Cumbria Traveline on 0871 200 22 33 or [www.travelinenortheast.info](http://www.travelinenortheast.info)



The formal gardens of **Bits Park** contain flower beds, lawns and a statue of Queen Victoria, and offer opportunities for relaxation, play and sports.

**You can:**

- Enjoy a cup of tea or an ice-cream at the kiosk.
- Play tennis, bowls, putting or football.
- Walk along the River Eden on part of the Hadrian's Wall National Trail.
- Enjoy the formal gardens and flower beds.
- Swing, slide or spin on the play areas.
- Cool down in the splash park.

**Visitor information:** Main entrance on Dacre Road off Castle Way. Park open 24 hours all year. Splash park open: Easter to October, 10am to dusk; Kiosk open: October to April 2pm to 10pm, May to September 10am to 9pm.



### E Bits Park



Watch for wildlife beside the beautiful River Petteril as it flows through **Melbourne Park**. There are play areas, full-size football pitches and a multi-use games area.

**You can:**

- Choose your game on the multi-use games area.
- Book a pitch for a game of football.
- Walk or cycle on a network of pathways.
- Swing, slide or spin on the play areas.
- Watch for wildlife along the river.

**Visitor information:** Various entrances include off Warwick Road, Botcherby Avenue and Melbourne Road. Open 24 hours all year.

### D Melbourne Park



**Heysham Park** is named after a local doctor who wanted the people of Carlisle to benefit from the health-giving properties of fresh air and exercise. Each part of the park has a different theme: the Flower Park, Play Park, Sports Park and the Country Park.

**You can:**

- Have a game of 5-a-side football.
- Explore one of the play areas.
- Enjoy the colourful flowers and shrubs.
- Watch out for wildlife in the woodland areas.

**Visitor information:** Various entrances include off Marks Avenue, Shady Grove Road and Raffles Avenue. Open 24 hours all year.

### C Heysham Park



**You can:**

- Follow the waterside and parkland paths.
- Take a break in the café.
- Play on the swings, slides and springers.
- Ride the BMX track.
- Have a kick-about in the multi-use games area.
- Book a full-size football pitch.

**Visitor information:** Main entrance off Blackwell Road. Open 8.30am to dusk all year; free car parking; public toilets. Café open 12 noon to 4pm, weekends and school holidays. Train rides every Sunday, April to October, 2pm until 4pm. Small charge.

A former brick-pit, **Hammond's Pond** was developed in the 1920s as 'Pleasureland' by local resident Archie Hammond. Today the park provides a wide variety of opportunities for outdoor enjoyment.

### B Hammond's Pond



**You can:**

- Follow the riverside and parkland paths.
- Watch out for kingfishers, otters and other river life.
- Visit Eden Bridge Gardens, adjoining the park.
- Discover links to Carlisle's Roman heritage and walk part of The Hadrian's Wall National Trail.

**Visitor information:** Main entrance off Brampton Road. Open 24 hours all year; free car parking.

**Please be aware that livestock graze in this park so please keep dogs under control.**



**Rickerby Park** is a living memorial to the fallen of the First World War. The Cenotaph stands in silent tribute whilst cattle and sheep graze beneath parkland trees. Paths follow the River Eden and by crossing the Memorial Bridge you can complete a circular walk back to the city centre.

### A Rickerby Park



**The Cenotaph**

**For more information** about anything in this leaflet, or about any of Carlisle's parks and green spaces, please look at [www.carlisle.gov.uk](http://www.carlisle.gov.uk) or phone Carlisle City Council on 01228 817200. A large print, text only version of this leaflet is available.