



Strategic Assessment 2009

Consultation Document

Table of contents

1.	Introduction	Page 3
2.	The Area	Page 3
3.	Current Partnership Priorities	Page 3
3.1	The wider performance picture	Page 3
4.	Summary of Findings	Page 4
5.	CDRP structure	Page 4
6.	Review of Performance	Page 5
6.1	Anti Social Behaviour	Page 5
6.1.1	Criminal Damage	Page 6
6.1.2	Youth Disorder	Page 6
6.2	Violent Crime	Page 7
6.2.1	Serious Violent Crime	Page 8
6.3	Domestic Violence	Page 8
6.4	Acquisitive Crime	Page 10
6.4.1	Vehicle Crime	Page 10
6.4.2	Burglary	Page 11
6.5	Prolific and Priority Offenders	Page 12
6.6	Substance Misuse	Page 13
6.6.1	Drug Crime	Page 14
7.	Conclusion and Recommendations	Page 15

1. Introduction

Carlisle and Eden Crime and Disorder Reduction Partnership has a duty to undertake an annual strategic assessment of local community safety priorities to inform the Partnership Plan. The aim of the strategic assessment is to provide an assessment of community safety issues affecting the two districts.

The strategic assessment is intelligence led and considers changes in the level and patterns of crime, disorder and substance misuse since the last assessment; and why these changes have occurred.

The time frame for data within this strategic assessment is April 2008-March 2009 unless otherwise stated.

2. The Area

The district of Carlisle has an area of 1,040km², with two main service centres, Carlisle and Longtown.

In 2007 the estimated population was 103,500 people and Carlisle had a density of 100 people per square kilometre.

The district of Eden has an area of 2,156 km², making it the eighth largest district in England. In 2007 the estimated population was 51,900 people and Eden had a density of 24 people per square kilometre. This is the lowest population density of any English district.

3. Current Partnership Priorities 2009/10

The current priorities for Carlisle and Eden CDRP are:

- Domestic Violence
- Violent Crime
- Anti-social Behaviour
- Criminal Damage
- Acquisitive Crime

The current County level priorities are:

- Domestic Violence
- Prolific and Priority Offenders

3.1 The Wider Performance Picture

Alongside the local Partnership priorities the CDRP must also take account of the following performance management systems and indicators:

- Local Area Agreement
- Assessment of Policing and Community Safety (APACS)
- National Indicators in relation to crime and community safety
- Public Service agreements

This makes the work of the partnership much harder, as we not only have local priorities to address, but also the County and national level priorities and there associated performance management frameworks.

4. Summary of Findings

The strategic assessment has highlighted the following key findings:

- Overall crime levels reduced in Carlisle and Eden by 13% (1621 crimes) comparing 2008/09 with the previous year.
- Anti-social behaviour reduced by 7% (1132 incidents), with youth disorder seeing a reduction of 17% (817 incidents).
- Drug offences in Eden have seen a reduction of 10% (16 offences) while Carlisle has seen an increase of 31% (103 offences)
- All vehicle crime decreased throughout the two districts by 20%. However some neighbourhood policing areas have seen an increase such as Penrith and Carlisle City West.
- Burglary dwelling reduced by 20% in the two districts. The category of burglary other than dwelling has seen a reduction of 5.1% (28 offences) in Carlisle while Eden stayed static at 188 offences.
- Criminal damage has seen a reduction of 24% across the two districts (890 incidents)
- Violent crime across the two districts has reduced by 13% (380 incidents). However there has been an increase of 10% (74 offences) in alcohol related violent crime.
- Domestic violence repeat victimisation rates have decreased in both areas. 2008/09 saw repeat victimisation rates of 36.8% in Carlisle and 27.6% in Eden compared with 47.8% (Carlisle) and 37.5% (Eden) the previous year.
- Business crime has seen a 9% reduction (254 less offences) throughout Carlisle and Eden.
- Through the Scafell Project there has been a reduction in offences by PPO's of 23% across the two areas.

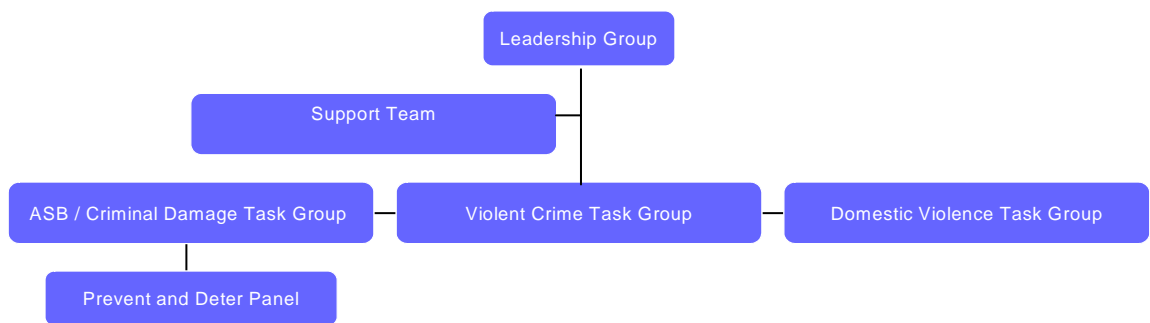
5. CDRP Structure

The Carlisle and Eden CDRP has 3 levels of working. The Leadership Group provides the strategic direction for the partnership, agreeing priorities and having an overview role in relation to Partnership resources. This group is supported by the Support Team, which provides the day to day management of the CDRP and provides recommendations to the Leadership Group in relation to; emerging

issues, Partnership resources and performance management. In order to deliver against our priorities, the Partnership has set up 3 task groups. These operational groups bring together all relevant partners to develop action to address the Partnership priorities.

Where necessary, task and finish groups are set up to address any emerging issues.

Fig 1 - CDRP structure



6. Review of Performance

Following the end of the 2008/09 financial year, the CDRP has reviewed the activity listed in the 2008/09 Partnership Plan and the figures in relation to the current priorities. Some of the work undertaken is highlighted below alongside the findings from the crime analysis.

6.1 Anti Social Behaviour and Criminal Damage (including youth disorder)

The crime analysis shows that anti-social behaviour has reduced in both areas, with Carlisle seeing the larger reduction of 9% compared with a 2% reduction Eden. Overall anti-social behaviour has reduced by 1,132 incidents comparing 2007/08 with 2008/09 figures.

Fig 2 - Anti Social behaviour incidents in Carlisle and Eden over the past two financial years

	2007/08	2008/09
ASB incidents	15,112	13,980

6.1.1 Criminal Damage

Criminal Damage has seen significant reductions in both areas, with Carlisle seeing a 23% reduction in 2008/09 and Eden seeing a larger reduction of 28%. Overall there have been 890 less incidents in 2008/09 than 2007/08.

Fig 3 - Criminal Damage incidents in Carlisle and Eden over the past two financial years

	2007/08	2008/09
Criminal Damage	3,688	2,798

Although we have seen reductions in both anti-social behaviour and criminal damage, the recent place survey shows that ‘teenagers hanging around streets’ is seen as the biggest problem in relation to anti-social behaviour in both Carlisle and Eden. Rubbish or litter lying around is seen as the second biggest problem with ‘vandalism, graffiti and other deliberate damage to property of vehicles’ being seen as the third biggest aspect of anti-social behaviour in both areas.

6.1.2 Youth Disorder

Youth disorder has seen significant reductions in 2008/09, with Carlisle seeing a 17% reduction and Eden 14% reduction. The figures below show the number of youth disorder incidents for the past two financial years, showing an overall reduction of 817 incidents.

Fig 4 - Youth Disorder incidents in Carlisle and Eden over the past two financial years

	2007/08	2008/09
Youth Disorder	4,867	4,050

Despite the reductions in anti-social behaviour and youth disorder, the public consultations survey shows that these two issues were highlighted as the most important neighbourhood issue in Carlisle. Whilst anti-social behaviour remains the most important neighbourhood issues in Eden, Youth disorder is the 6th most important issue.

Current Partnership Work

- Safe clubs are run at both Morton and Trinity Schools in Carlisle to provide facilities for young people.

- A youth facility at Longtown has been supported by the CDRP to provide boxing training for young people in the area.
- The Partnership supports an anti-social behaviour assistant covering the Carlisle area. This post works closely with partner agencies in relation to abandoned cars and the wider ASB agenda in order to reduce incidents and perceptions of ASB.
- Re-deployable CCTV cameras continue to be deployed at priority locations throughout Carlisle and Eden.
- Mosquitos are deployed in priority locations within Carlisle and Eden - deployment follows a strict protocol and is dependant on a completed risk assessment for the area.
- The CDRP supports Resolve Mediation, which provides mediations services for disputes in both Carlisle and Eden.
- Operation Roman Candle runs through October and November to ensure reduced anti-social behaviour and criminal damage over Halloween and Bonfire night.
- The Prevent and Deter Panel provide early intervention for young people at risk of [further] offending.

6.2 Violent Crime

Violent crime has reduced in Carlisle and Eden by 13%, with Carlisle seeing a reduction of 12% (285 incidents) and Eden seeing an 18% reduction (95 incidents).

Fig 5 - Number of Violent Crimes in Carlisle and Eden over the past two financial years

	2007/08	2008/09
Violent Crime	2,931	2,551

Although violent crime has fallen, the number of violent crime committed under the influence of alcohol increased by 10% in 2008/09 compared with 2007/09. This equates to an 11% increase in Carlisle and a 7% increase in Eden.

The number of crimes recorded in licensed premises has reduced by 15% across the two areas, 16% in Eden and 15% in Carlisle. Some of this reduction can be attributed to the work of the violent crime task group working closely with the licensing departments of the two District Authorities and the Police to make the night time economy safer.

Although there have been many interventions to reduce alcohol misuse locally and nationally, the 2008 public consultation survey showed that residents of Carlisle place alcohol misuse as the 9th most important neighbourhood issue whilst underage drinking was the 5th most important issue. Eden residents placed alcohol misuse as the 7th most important issue and underage drinking as the 5th.

6.2.1 Serious Violent Crime

Most serious violent crime has seen an overall reduction in Carlisle and Eden of 5%. However when this is broken down into districts, we can see that while Carlisle had a reduction of 10% in serious violent crime, Eden has seen a 23% increase. However this increase of 23% can be misleading since the rise is very small - there has been an actual increase of 3 serious violent crimes in Eden comparing 2008/09 with 2009/10. The level of violent crime in Eden remains very low indeed.

Fig 6 - Number of Serious Violent Crimes in Carlisle and Eden over the past two financial years

	2007/08	2008/09
Serious Violent Crime	68	65

Although we have seen a small increase in Eden for most serious violence, Iqunta data for the time period January-March 2009, shows that both areas are among the best in their family group for most serious violent crime.

Current Partnership Work

- CADAS safer clubbing assessments are utilised throughout both areas to ensure a safe night time economy. These assessment highlight problem areas so that the appropriate action can be taken.
- Designated Public Place Orders are in place throughout Carlisle and Eden to reduce alcohol related violent crime. The Botcherby Closure is also utilised when appropriate to reduce alcohol related violent crime and disorder
- The Best Bar None Scheme continues to be successful throughout Carlisle and Eden.
- Multi agency visits are conducted at premises who consistently fail to address issues relating to crime and disorder. Licensee's are supported to deliver an action plan to address these issues
- Test Purchase operations take place throughout North Cumbria to reduce the amount of alcohol sales to underage individuals.
- Body worn surveillance is used within the night time economy and at priority events throughout Carlisle and Eden to prevent violent crime and also to be used as evidence when necessary.

6.3 Domestic Violence

The Domestic Violence Task Group within Carlisle and Eden CDRP has now been renamed to become the Domestic Abuse Task Group, they group are now covering all forms of domestic abuse rather than just physical violence. The action plan has been developed to deliver against the Cumbria Domestic Violence Partnership Business Plan at a

local level and works very closely with this partnership to ensure a joined up approach to delivering services to survivors of domestic abuse and to raise awareness of this type of crime throughout the area.

The domestic violence figures for the CDRP are split into the two district areas, with the convictions data covering the Carlisle Criminal Justice Unit area, using December 2008/09 data compared with December 2007/08 as this is the most up to date data available.

Fig 7 - Domestic Violence figures for Carlisle

Year	2007/08	2008/09
Number of Incidents	1,288	1,106
Number of Repeat Victims	47.8%	36.8%

Fig 8 - Domestic Violence figures for Eden

Year	2007/08	2008/09
Number of Incidents	253	225
Number of Repeat Victims	37.5%	27.6%

Fig 9 - Domestic Violence convictions for Carlisle CJU area

Year	December 2007/08	December 2008/09
Number of Convictions	58.3%	91.3%

From the data above we can see that Carlisle and Eden have both seen a reduction in incidents and repeat victims.

As we can see convictions have increased for the Carlisle CJU area by 33% and we can attribute this increase to the introduction of the domestic violence courts alongside the other services offered such as Independent Domestic Violence Advisors and the Multi Agency Risk Assessment Conferences (MARAC).

Current Partnership Work

- Multi Agency Risk Assessment Conferences are running in North Cumbria
- There are currently 6 Independent Domestic Violence Advisors covering Carlisle and Eden, The CDRP funds one of these Advisors and a part time Administration Officer for the project.
- Specialist Domestic Violence Courts are in place in North Cumbria.
- The CDRP has supported Safety Net, an organization aimed at helping survivors of domestic abuse and their families.

Data from the Cumbria Domestic Violence Partnership shows that there

have been 370 high risk domestic violence cases have been to MARAC in north Cumbria since May 07 and 296 children identified as being affected by domestic violence.

The Let Go project that covers Carlisle and Eden had almost 700 new referrals in 2008. These figures show the proven need for an effective service for survivors of domestic violence in Cumbria and the CDRP is working with the Domestic Violence Partnership to look at funding options for 2010 onwards.

6.4 Acquisitive Crime

6.4.1 Vehicle Crime

Carlisle and Eden have seen an overall reduction of 4% in theft of a vehicle in 2008/09 compared with the previous year. When comparing the two districts separately, we can see that although Eden continues to see a reduction of 26%, Carlisle actually saw an increase of 3% in 2008/09. However comparing 2008/09 data with 2006/07 data for Carlisle shows an overall 3 year reduction of 27%.

Fig 9 - Theft of a motor vehicle for Carlisle and Eden over the past 3 financial years

Theft of a motor vehicle	2006/07	2007/08	2008/09
Carlisle	293	206	213
Eden	62	72	53

Theft from a motor vehicle has seen a significant reduction of 27% over the two districts, with Eden seeing a reduction of 33% and Carlisle a reduction of 26%.

Current Partnership Work

- Voice Connect is used to issue warnings to local campsites.
- Smartwater is used in priority locations to combat van and quad bike thefts.
- Trackers are used at priority locations to combat quad bike thefts.
- The CDRP continues to respond to seasonal trends through safety campaigns e.g. 'lock it or loose it'.
- Talking Signs are used in priority locations throughout Carlisle to ensure security messages are delivered to the public.
- Safer Car Park schemes are ongoing throughout Carlisle and Eden.

6.4.2 Burglary

Domestic burglary throughout Carlisle and Eden saw a reduction of 14% in 2008/09 compared to the previous year; this is a significant reduction in this type of crime.

Fig 10 - Domestic Burglary figures for Carlisle and Eden over the past 2 financial years

	2007/08	2008/09
Burglary	293	251

The 2008 public consultation survey also showed that being a victim of crime in your home was highlighted as 14th neighbourhood priority out of 19 categories in Carlisle and 16th out of 19 in Eden. Although the perception of being a victim of crime in your own home is relatively low, an incident of burglary can have a high impact on the victim and can often affect the whole community.

Data from the past few years show that there have been peaks in August and we expect these peaks to continue. Due to the devastating effects this type of crime can have, the CDRP has continued to support campaigns and target hardening measures to combat this type of crime.

Burglary other than a dwelling has seen a reduction of 4% throughout Carlisle and Eden comparing 2008/09 data with 2007/08. However, when this data is broken down, we can see that Carlisle has seen a reduction of 5.1% while Eden has remained static at 188 incidents over these two years. If we compare the last three years, we can see that Eden has had a reduction of 32%, while Carlisle has seen a reduction of 25% over the same period.

Fig 11 - Burglary other figures for Carlisle and Eden over the past 2 financial years

	2006/07	2007/08	2008/09
Burglary other	970	734	706

Current Partnership work

- Secured by Design security advice continues to be given by trained officers and security improvements are provided in priority locations to prevent burglary.
- Environmental improvements are provided to make areas safer and to create natural surveillance.
- The CDRP responds to seasonal trends and emerging problems with preventative campaigns and provides security advice for members of the public.

- No Cold Calling Zones are being developed in Carlisle to reduce distraction burglary and doorstep selling.
- Shed alarms are provided to reduce burglary from sheds and outdoor buildings.

Although there is an expectation that the current economic climate is likely to have an adverse impact on acquisitive crime, this has yet to be seen in the figures. However, we will continue to monitor this situation and respond to any emerging trends in acquisitive crime.

6.5 Prolific and Priority Offenders

The Scafell Project began its multi-agency approach to tackling “Prolific and Priority Offenders” on the 1st April 2007.

Position as at 31st March 2009:

The North BCU Scafell team manages 26 PPO's, 24 with residential addresses in the Carlisle area, and 2 in Eden.

In North Cumbria 24 of the 26 are male, the average age is 28, the youngest being 19 and the eldest 40.

Performance of the Scafell Project is tracked monthly for those offenders on the scheme during that month, taking their worst six months of offending history as a baseline to compare with their current offending record. Performance is also tracked quarterly and annually at force level by Government Office North West for a fixed list of 63 offenders. This is based on convictions and is lagging.

Count of all crimes in Carlisle and Eden by offenders who were Scafell Project clients on the 31st March 2009:

Fig 12 - Count of all crimes in Carlisle and Eden by offenders who were Scafell Project clients on the 31st March 2009

Offence Type	2006/07	2007/08	2008/09	% Change from 06/07 to 08/09
Burglary Dwelling	1	0	11	1000%
Burglary Other	7	4	8	14%
Criminal Damage	13	9	6	-54%
Drugs	4	15	18	350%
Fraud & Forgery	3	2	0	-100%
Offences Against the Person	22	16	13	-41%
Other	10	6	7	-30%
Robbery	2	0	0	-100%
Sexual Offences	0	0	0	N/A
Theft	36	37	26	-28%

Theft from a Motor Vehicle	24	6	8	-67%
Theft of a Motor Vehicle	6	1	1	-83%
Grand Total	128	96	98	-23%

From 2006/07 to 2008/09 there was a 23% overall reduction of offences by PPOs in Carlisle and Eden. Burglary has seen the greatest percentage increase over the period, of dwellings being a particular problem. Drugs offences have also increased substantially. In 2008/09 36% of crimes committed by PPOs were theft related offences.

6.6 Substance Misuse

The impact of drug dealers and misuse on the local community and the anti-social nature associated with Class A drug use has been highlighted by numerous surveys; British Crime Survey results for Cumbria show that 25.4% of people asked thought that drug dealing was a problem in their area, the recent place survey shows that 24% of people asked in Carlisle and 22% of people asked in Eden perceived people using or dealing drugs as a big or fairly big problem in their area.

DAAT data show us that there were 611 people presenting for treatment in 2008/09. With the majority of people presenting with Heroin use as their first drug and benzodiazepines as their second drug. 6% of those in treatment identified alcohol as their third drug; this was the highest percentage for those identifying a third drug.

Drug Intervention Programme (DIP)

The DIP aims to tackle drug related crime by offering holistic treatment and support to individuals entering the Criminal Justice System with substance use issues. This can happen at any stage of their contact with the Criminal Justice System from pre-arrest targeting by police to release from prison.

In 2008/09 there were 140 individuals targeted by the DIP team in Carlisle and Eden (This equated to 131 in Carlisle and 9 in Eden). Carlisle makes up 37% of the DIP clients in Cumbria, while Eden makes up 3%. Of these clients, the majority identified heroin as their primary drug (73% of Clients in Carlisle and 88.9% of Clients in Eden)

The six highest offence types committed by DIP in Cumbria were:

Offence Type	Occasions	Percentage
Theft - shoplifting	65	24.3%
Possession	54	20.1%
Supply	20	7.5%
Theft - other	18	6.7%
Burglary - domestic	17	6.3%

Wounding or assault	13	4.9%
---------------------	----	------

6.6.1 Drug Crime

Carlisle has seen a significant increase in Drug Offences since 2006/07. While 2007/08 saw offences increase significantly by 20% (56 Offences), 2008/09 saw a further increase of 31% (103 Offences).

Fig 13 - Drug crime in Carlisle for the past 3 financial years

Crime Type	2006/07	2007/08	2008/09
Drug offences	279	335	438

Eden has seen an increase in Drug Offences since 2006/07. While 2007/08 saw offences increase significantly by 50% (56 Offences), 2008/09 saw a decrease of 10% (16 Offences). This was still 36% (40 Offences) higher than in 2006/07.

Fig 14 - Drug crime in Eden for the past 3 financial years

Crime Type	2006/07	2007/08	2008/09
Drug offences	111	167	151

Although there has been a significant increase in drug crimes since 2006/07, this can be seen as a positive as it means there have been more arrests, and a reduction in the quantity of drugs in circulation.

Current Partnership work

- The CDRP continues to support operations to deploy passive drugs dogs in order to reduce the amount of illegal drug use in the night time economy.
- Drugs lights and drugs wipes are used within the night time economy, and at other events throughout Carlisle and Eden to test for drug use.
- Safer Clubbing Assessments are in use throughout Carlisle and Eden to provide a safe night time economy.

While substance misuse is an important issue for the area and work continues within the existing task groups to combat substance misuse, it has been difficult to establish how the CDRP can add value to existing work by key partners, in particular Cumbria Police and Cumbria Primary Care Trust. However, we will continue to work with the partners and engage with Cumbria Drug and Alcohol Action Team to determine how the CDRP can add value in this area.

7. Conclusion and Recommendations

Based on the results of the full Strategic Assessment, the recommendations are that Carlisle and Eden CDRP work towards the crime priorities listed below. Crime data will be monitored on a regular basis by the Partnership to ensure we respond to any emerging issues.

The recommendations are:

1. The following themes to be priorities for year 3 of the Carlisle and Eden 3 year rolling Partnership Plan, to be addressed within the existing task group structure:
 - Violent crime - Including alcohol related violent crime
 - Anti-social behaviour - Including youth disorder
 - Criminal Damage
 - Domestic Violence
2. Prolific and Priority Offenders to remain a priority for the Partnership, addressed through the Scafell Project.
3. Substance and alcohol misuse to be a Partnership Priority, tackled through close working with the Cumbria Drug and Alcohol Action Team.
4. Although acquisitive crime is not one of the Partnerships main priorities with its own task group, the evidenced links between this crime type, substance misuse and prolific offenders, means this crime type will continue to be addressed via these areas of work. However, it is also recommended that the partnership continue to provide preventative measures and respond to known seasonal trend to ensure this crime type continues to fall.

Contact Details

For further information or to comment on the recommendations made, please contact:

Louise Wilkinson
CDRP Business Manager
Town Hall
Penrith
Cumbria
CA11 7QF

Telephone: 01768 817817
Email: cdrp@eden.gov.uk