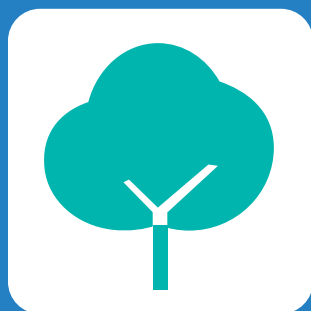


Budget Consultation

2021/22

Have Your Say



CARLISLE
CITY COUNCIL



www.carlisle.gov.uk

Budget Consultation 2021/22

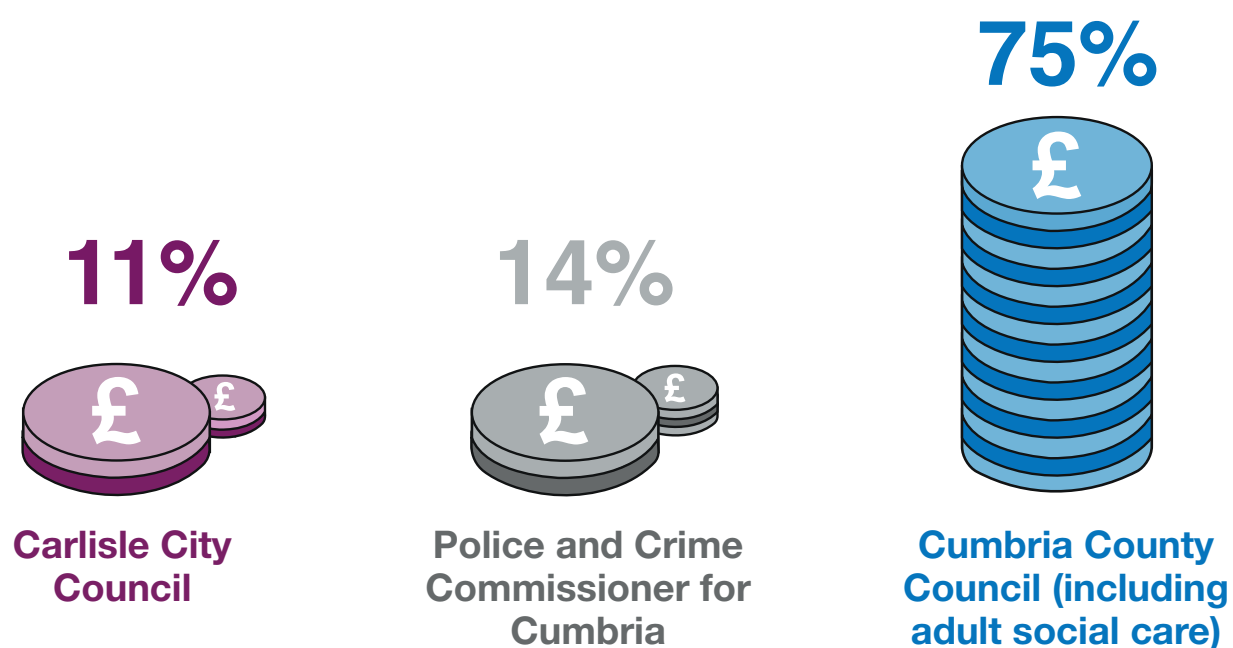
As part of our budget consultation, we want to know your views on how we spend your money.

Our budget consultation will take place between **Monday 14 December 2020 and Monday 11 January 2021**.

Where do we get our money from?

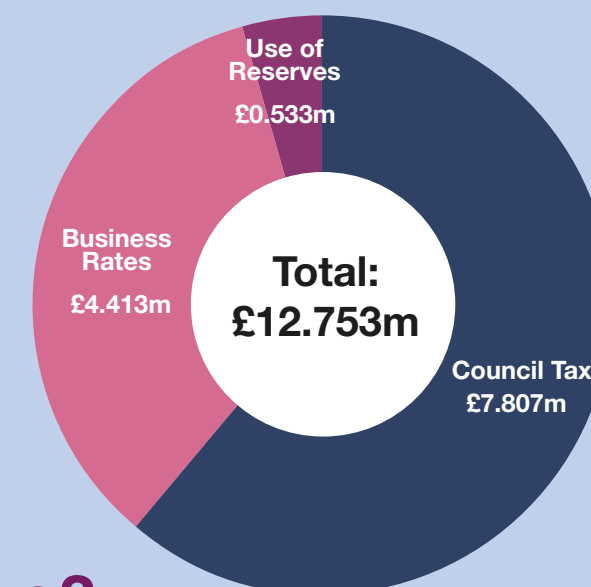
We collect **£7.807million from Council Tax** which is only **11%** of the overall Council Tax bill you pay or, for 2020/21, **£4.17 per household per week for a Band D property**.

We collect the remainder of your Council Tax bill on behalf of Cumbria County Council, Cumbria Police and Crime Commissioner and Parish Councils.



* In rural areas an additional parish precept is added. This is variable and is set by the Parish Council.

We retain **£4.413million from Business Rates** which is only **10%** of the overall Business Rates collected. The remainder is distributed to Cumbria County Council and Central Government.



Where does my money go?

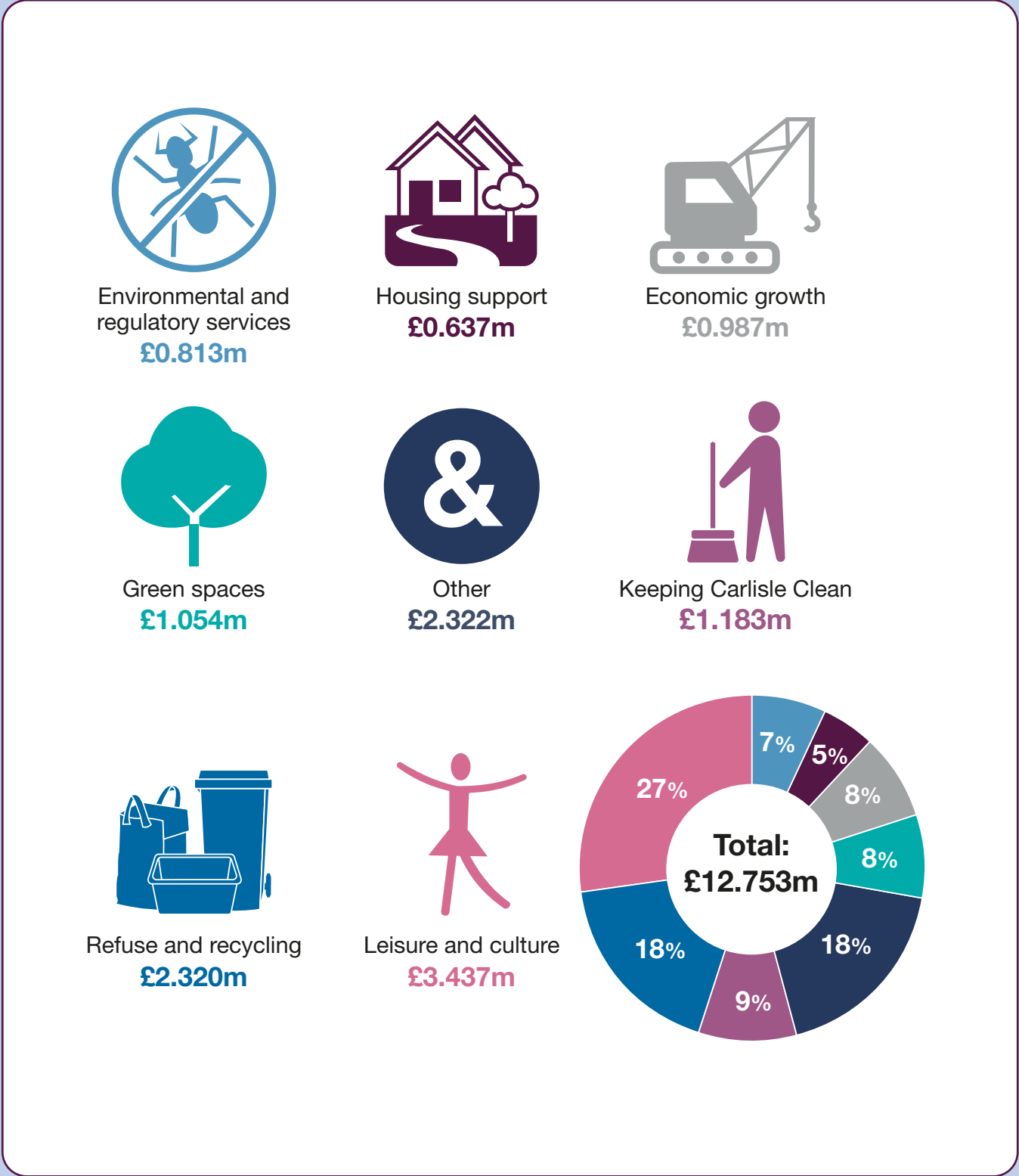
Your **£4.17 per household (Band D) per week** is spent in the following areas:



*Other services include revenues, benefits, property, support services and democratic services

We welcome your views on our budget

...and this is spent on the delivery of the following services:



* Before proposed spending changes and reductions 2021/22.
** Other services include Revenues, Benefits, Property, Support Services and Democratic Services.

We welcome your views on the areas we spend your money

Council Achievements and Ambitions

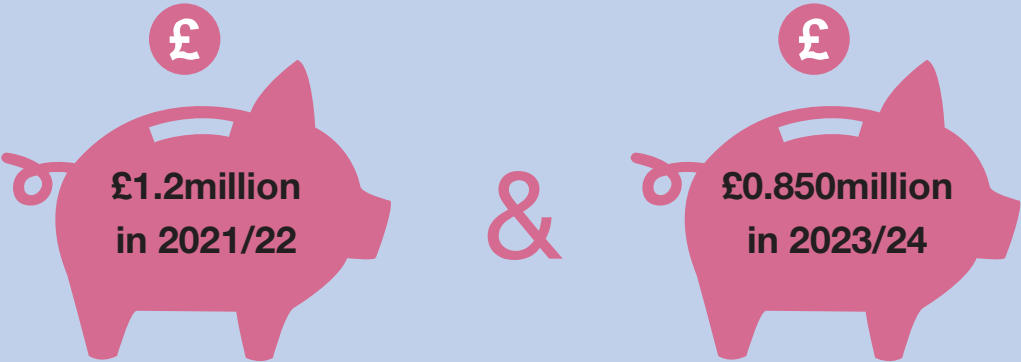
We use your Council Tax to ensure core services such as refuse collection and maintaining parks and open spaces are delivered to a high standard.

We are also committed to ensuring that Carlisle has the opportunity to grow and improve. With that in mind we continue to strive to look at ways of investing in the city, including:

- More than £25million will be invested in new state of the art leisure and entertainment facilities to be located at The Sands Centre.
- We're a partner in the Borderlands Inclusive Growth Deal. This will see investment of £65million in improvements in and around Carlisle Station and the Citadels area.
- St Cuthbert's Garden Village project will result in significant investment in new housing and infrastructure to the South of Carlisle.
- £25m of improvements will assist in revitalising the City Centre area through the Towns Deal.
- We are committed to becoming Carbon Neutral.

What savings do we need to make?

We have successfully achieved or identified over £9million in transformational savings since 2010/11. A revised savings requirement has been calculated of an increase from £1million to £1.2million in 2021/22; increasing to £2.05million in 2023/24.



We anticipate receiving an additional £1.2million from Business Rates income in 2021/22. It is anticipated that we will add to our general reserves in 2021/22 but will need to use some of our general reserves in future years to meet expenditure requirements. These reserves will be brought back to minimum levels over the life of the MTFP.

We welcome your views on additional expenditure requirements for 2021/22

Council Tax

We propose to increase Council Tax by **£5 per annum for 2021/22 for a Band D property**. This is the equivalent of **10p per week**. This will provide us with **£177,000** of additional funding for services.

Council Tax is split into eight bandings based on property valuations. The valuation bandings were set by Government with the introduction of Council Tax in 1993.

Annual proposed cost 2021/22 assumes a £5 increase for a Band D equivalent property.

| Band | Annual cost 2020/21 | Annual cost proposed 2021/22 | Proposed increase per household, per week |
|---------------------------------|---------------------------------------------------------------------------------------------|---------------------------------------------------------------------------------------------|------------------------------------------------------------------------------------------------|
| A (Under £40,000) | £144.80  | £148.13  | 6 pence  |
| B (£40,001-£52,000) | £168.93  | £172.82  | 7 pence  |
| C (£52,001-£68,000) | £193.07  | £197.51  | 9 pence  |
| D (£68,001-£88,000) | £217.20  | £222.20  | 10 pence  |
| E (£88,001-£120,000) | £265.47  | £271.58  | 12 pence  |
| F (£120,001-£160,000) | £313.73  | £320.96  | 14 pence  |
| G (£160,001-£320,000) | 362.00  | £370.33  | 16 pence  |
| H (Over £320,000) | £434.40  | £444.40  | 19 pence  |

Fees and Charges

Fees and charges for services provide vital financial support to the delivery of those and other services. We are proposing to increase car parking charges for 2021/22 by inflation to cover increased costs of providing the services.

We welcome your views on how we charge for services

Our financial challenges

We are determined to protect important services by doing things differently, such as:

- Working in partnership with other councils or organisations;
- Buying in services (where it makes good financial sense);
- Looking at transferring services to alternative providers and to community groups, if appropriate;
- Focusing on raising more income from our own assets; and
- Making our services even more efficient.

We welcome your views and suggestions as to how we can meet these financial challenges.

How can I have my say?

Let us know what you think of our budget proposals.

More information is available at www.carlisle.gov.uk/Council/Council-and-Democracy/Budget

Any comments can be emailed to communications@carlisle.gov.uk or write to:
The Chief Executive,
Carlisle City Council,
Civic Centre,
Carlisle, CA3 8QG

The deadline for responses is **Monday 11 January 2021.**

